



Seoul Office 355, Hyoryeong-ro, Seocho-gu, Seoul, 06643, Republic of Korea
Headquarter 467, Sapgyopyeongya-ro, Godeok-myeon, Yesan-gun, Chungcheongnam-do, 32402, Republic of Korea

NOX LDW⁺

LUXURY DESIGN WALL & INTERIOR TILE

Stile



NOX FLOR[®]
by NOX Corp.

NOX LDW⁺

LUXURY DESIGN WALL & INTERIOR TILE

Stile

Premium Standard, Sophisticated Solution

Contents

About	04
Why Stile	10
Design Index	16
Collection	18

NOX
LDW+
LUXURY DESIGN WALL & INTERIOR TILE

Stile

Premium Standard, Sophisticated Solution

IRREPLACEABLE!

First ever, the better, luxury design tile adding premium value to a space



Solid, more durable!

Unmatched durability with scratch & dent resistance



Soft, more comfortable!

Soft underfoot comfort with NOX EMT™ Technology



Stylish, more natural!

The world's largest collections of global designs solution



Safe, more hygienic!

Ultimate hygiene solution with NOX EPT™ Technology

Premium

Stile

NOX's Stile is a hybrid interior tile utilizing the world's leading LVT company NOX's innovative technology to optimize the advantages of ceramic tiles while compensating for their disadvantages.

Stile's outstanding quality, durability, and realistic design solution present a new standard for the premium space.

INNOVATIVE!

Easier, stronger installation with
**the world's first
diagonal-cutting edge technology**



Save cost and time



Stronger joint, stronger floor



Lighter weight, simpler installation

Technology

NEE SYSTEM NOX EASY EDGE SYSTEM

NOX's Stile incorporates the 'NOX Easy Edge System', providing the easiest and fastest installation with the world's first diagonal-cutting edge technology. This unique edge technology grants extra stability and durability to the joint, offering a soft foot feel and a seamless surface.

Experience the next level interior tile with easier, faster installation and stronger joint



SUSTAINABILITY STANDARD!

The world's first and most sustainable interior tile



Sustainable
interior tile with
carbon reducing
raw materials



minimal resource-requiring
high-quality interior tile with
energy-minimizing production



100% easily
recyclable interior tile



03 Sustainable

Stile, the world first interior tile made with sustainable material

NOX Stile is the world's first to use 90% of its raw materials with sustainable raw materials, produced using discarded resources such as waste cooking oil and recycled PET bottles, to contribute to carbon reduction. These materials have earned ISCC PLUS certification, the world's most prestigious sustainability certification. NOX redefines the sustainability standard of flooring



Save

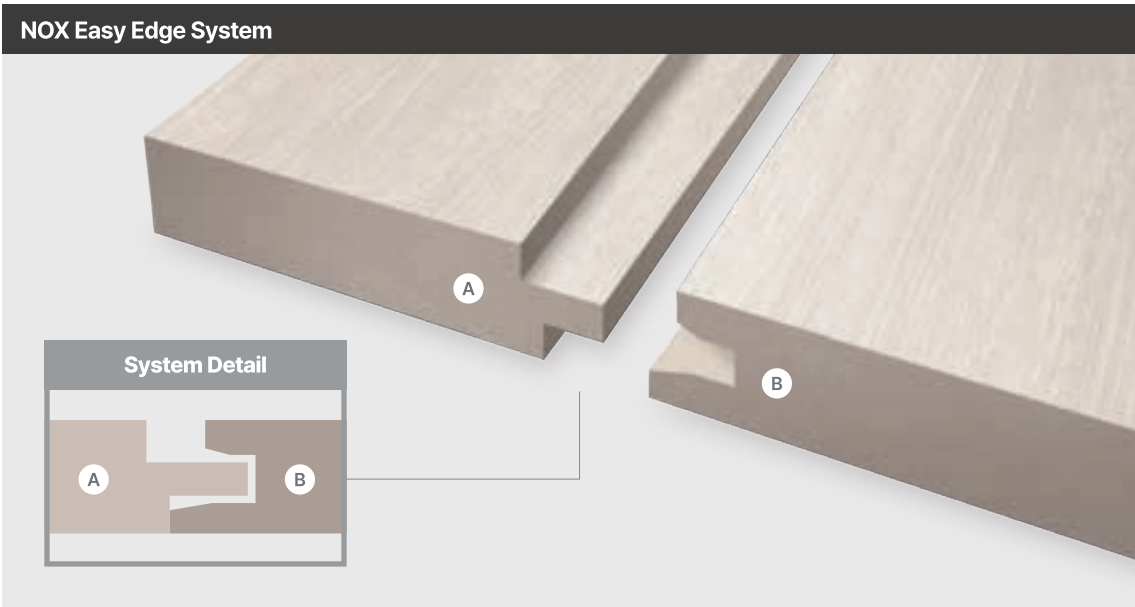
01 - Easier and Faster Installation!



Easier, faster installation with stronger joinery methods
NOX Easy Edge System

NEE SYSTEM

The world's first diagonal-cutting-edge technology providing the easiest and fastest installation. Experience the NOX Easy Edge system applied next level interior tile, presenting easier, faster installation and a stronger joint



01 Faster installation!

Easy installation method reduce flooring installation time to within 24hr *
*can vary depending on installation environment & conditions



02 Easier installation!

Lightweight of the tile, than ceramic tile, eases workload and reduces damage risk during preparation and installation



Solid

02 - More Durable with scratch and dent resistance!



More durable NOX Stile
EMT™ Core, multi-layered technology & EPT™ Shield, high performing premium coating technology

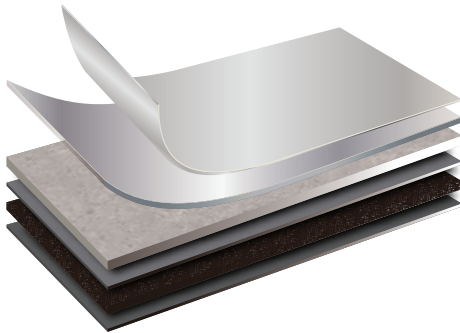
NOX technologies prevent impact damage and scratches, making it safe for family usage. In addition, high resistance to discoloration and contamination eases management, while strong durability preserves high quality for a longer time.

EMT™ Core & EPT™ Shield



EPT™ Shield

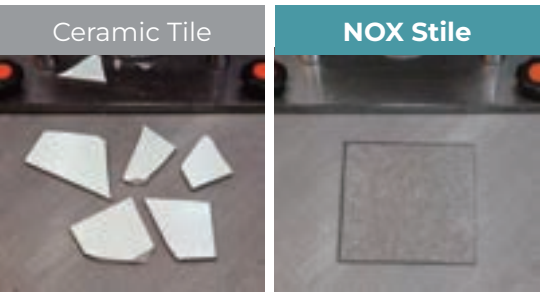
EMT™ Core



01 Damage Resistant!

Lower risk of cracking or breaking than ceramic or natural tiles that could lead to injury

*Tested with modified EU certified EN 13329:2006+A1:2008 test methods



02 Scratch Resistant!

Classified with Class 4*, withstanding heavy traffic from commercial area such as hotels and department stores. Strong for outer impact or pet scratches

*Test result for Surface Abrasion (ASTM-C1027)



Safe

03 - Safer and More Hygienic Maintenance!

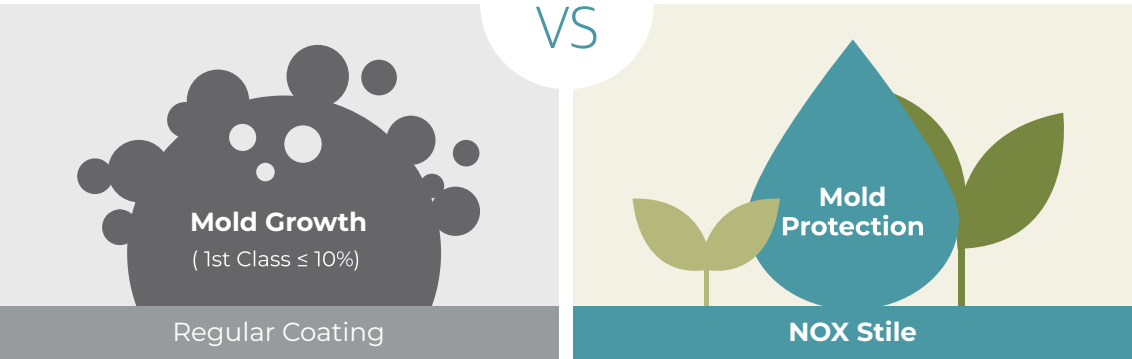


Enhance hygiene in the bathroom with **NOX coating technology**

01 Safer and more Hygienic, **EPT™ Shield coating technology**

EPT™ Shield technology not only creates premium matte texture, but it also features discoloration and contamination resistance that ease cleaning and maintenance and an anti-mold coating for more hygienic environments. The safety of the antibacterial materials used for EPT™ Shield technology has been approved by the US EPA

* US EPA : US Environmental Protection Agency



02 Phthalate-**free!** Heavy metal-**free!** Pollution-**free!**

Zero-heavy metals contain reliable interior tile with eco-friendly certification. Also safe and sustainable with carbon-reducing raw material usage.



Soft

04 - More Enhanced Comfort and Resilience!



Flooring solutions designed for your family: **enhanced safety and reliability**

01 **No.1 acoustic performance, better than ceramic tile**

The NOX multi-layer technology reduces the noise level by absorbing the physical impact sound. In addition, the temperature of the flooring's surface remains constant, creating a comfortable environment for barefoot walking in the winter or summer.



02 **Healthy choice for all family member**

Interior tile, comfortable to walk for kids to the elderly



Stile's resilience offers a softer, more comfortable walking experience than the hard and solid ceramic tile

KS M3802 test	Ceramic Tile	NOX Stile
KS M3802 test More than 0.25mm(23℃)	No resiliency	More than 0.25mm(23℃)
Test for recovery from indentation Less than 8% (KC certified)	Not applicable	Excellent recovery

Stylish

05 - More Realistic and Stylish Design!



Leading trendy design:
NOX's exclusive curation of premium spaces



01

More Classic!

NOX's in-house design team presents a carefully selected curation of classic designs that fit into any space. A detailed portrayal of the stone and wood's unique features will upgrade the existing space with freshness

02

More Realistic!

NOX have the world's leading, largest in-house design solution with over 6,000 designs that have won world-renowned awards. More realistic texture created with proven global design experience offers a premium space.



Pattern Index

FLOOR	SIZE 590×590mm×4.5T	WALL	SIZE 590×1,180mm×4.5T
	PACKAGE 8pcs/Box (2.78m²)		PACKAGE 4pcs/Box (2.78m²)

Travertine



New

Trani Ivory

FLOOR LDS-45101-01WALL LDS-45101-02

Limestone

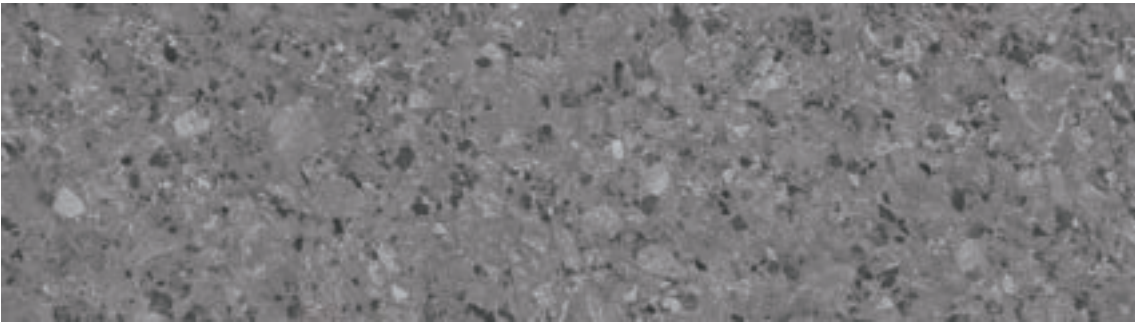


New

Lagos Grey

FLOOR LDS-45201-01WALL LDS-45201-02

Ceppo di gre



New

Mundo Deep

FLOOR LDS-45301-01WALL LDS-45301-02

Sand Stone



New

Dover White

FLOOR LDS-45102-01WALL LDS-45102-02

New

Dover Ivory

FLOOR LDS-45103-01WALL LDS-45103-02

New

Dover Beige

FLOOR LDS-45104-01WALL LDS-45104-02

Concrete



New

Baston White

FLOOR LDS-45202-01WALL LDS-45202-02

New

Baston Grey

FLOOR LDS-45203-01WALL LDS-45203-02

New

Baston Deep Dark

FLOOR LDS-45204-01WALL LDS-45204-02

Natural Stone



New

Fino White

FLOOR LDS-45302-01WALL LDS-45302-02

New

Fino Grey

FLOOR LDS-45303-01WALL LDS-45303-02

New

Fino Deep Grey

FLOOR LDS-45304-01WALL LDS-45304-02

Catalog images are indicative of the quality and style of the product specification but may not represent the actual details.

NOX LDW+ LUXURY DESIGN WALL

Travertine



New Trani Ivory

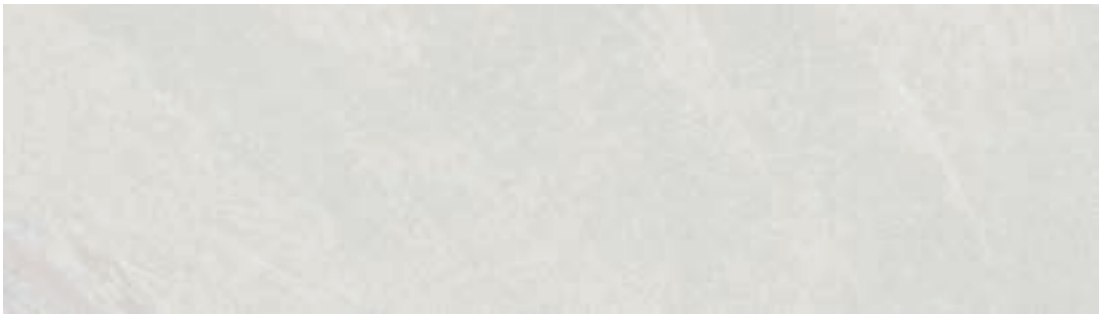
FLOOR LDS-45101-01 WALL LDS-45101-02



Catalog images are indicative of the quality and style of the product specification but may not represent the actual details.

NOX LDW+ LUXURY DESIGN WALL

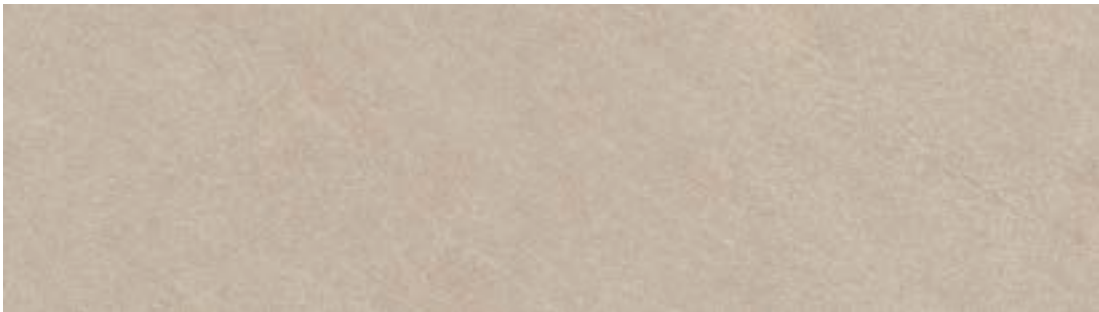
Sand Stone



New **Dover White** **FLOOR** LDS-45102-01 **WALL** LDS-45102-02



New **Dover Ivory** **FLOOR** LDS-45103-01 **WALL** LDS-45103-02



New **Dover Beige** **FLOOR** LDS-45104-01 **WALL** LDS-45104-02



Catalog images are indicative of the quality and style of the product specification but may not represent the actual details.

NOX LDW+ LUXURY DESIGN WALL

Limestone



New Lagos Grey FLOOR LDS-45201-01 WALL LDS-45201-02

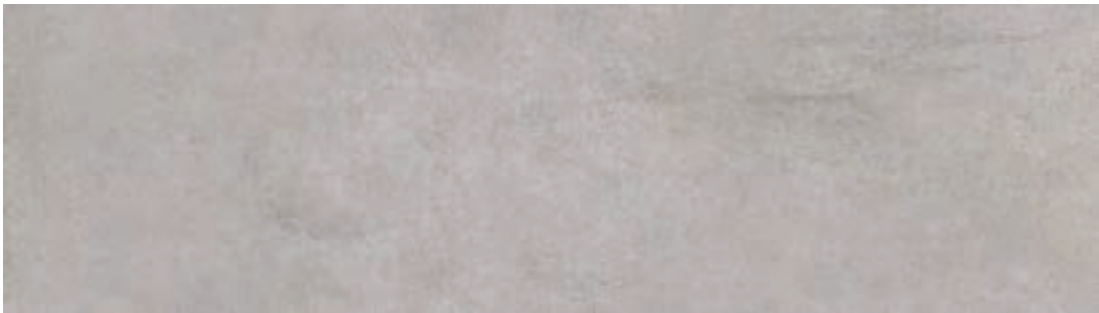
Catalog images are indicative of the quality and style of the product specification but may not represent the actual details.

NOX LDW+ LUXURY DESIGN WALL

Concrete



New Baston White FLOOR LDS-45202-01 WALL LDS-45202-02



New Baston Grey FLOOR LDS-45203-01 WALL LDS-45203-02

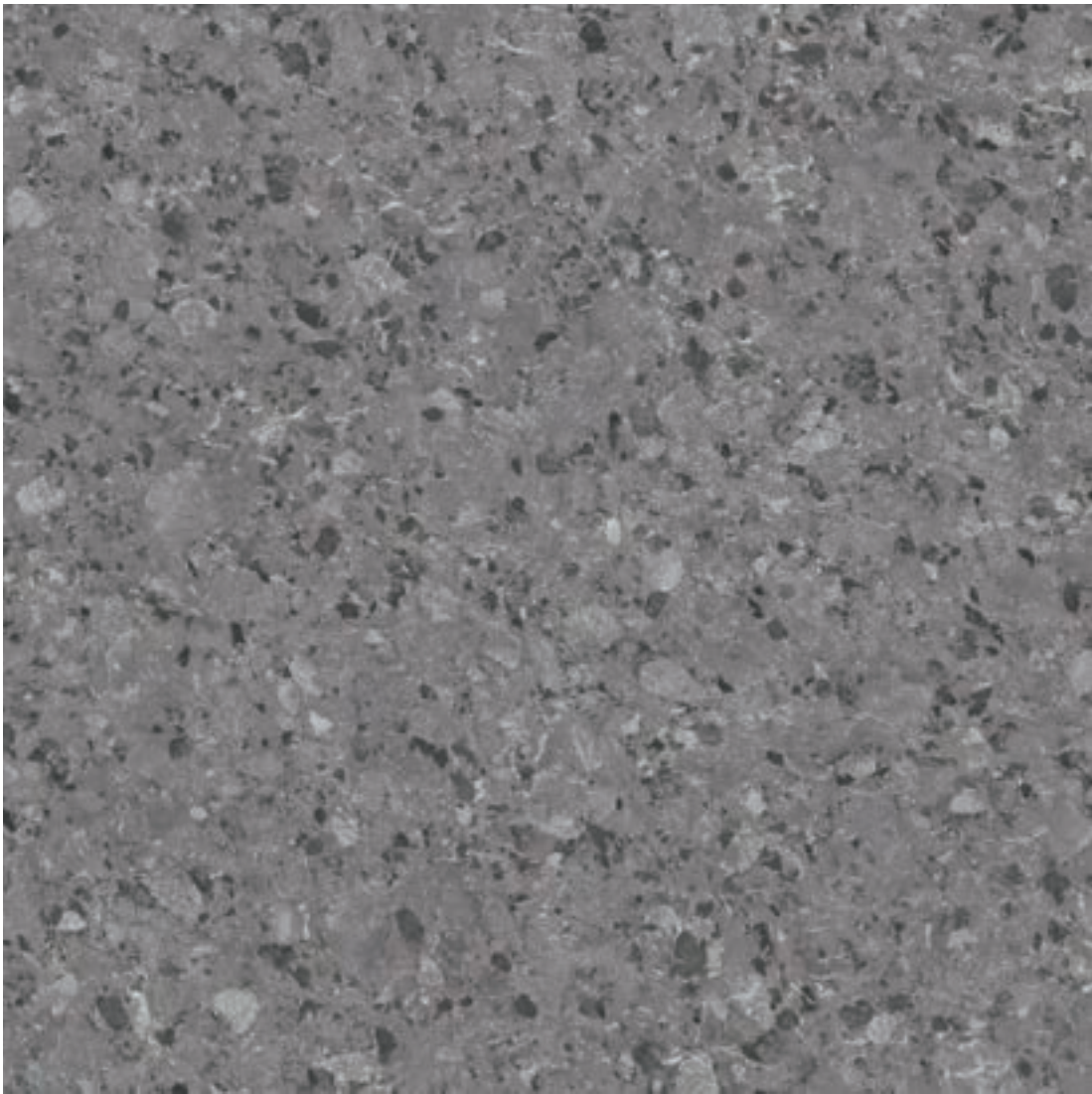


New Baston Deep Dark FLOOR LDS-45204-01 WALL LDS-45204-02

Catalog images are indicative of the quality and style of the product specification but may not represent the actual details.

NOX LDW+ LUXURY DESIGN WALL

Ceppo di gre



New Mundo Deep

FLOOR LDS-45301-01 WALL LDS-45301-02

Catalog images are indicative of the quality and style of the product specification but may not represent the actual details.

NOX LDW+ LUXURY DESIGN WALL

Natural Stone



New Fino White FLOOR LDS-45302-01 WALL LDS-45302-02



New Fino Grey FLOOR LDS-45303-01 WALL LDS-45303-02



New Fino Deep Grey FLOOR LDS-45304-01 WALL LDS-45304-02